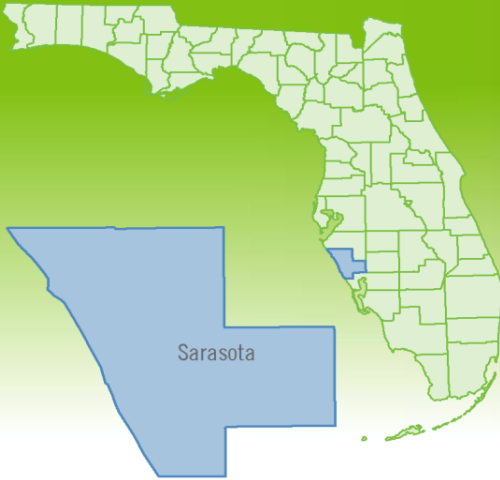


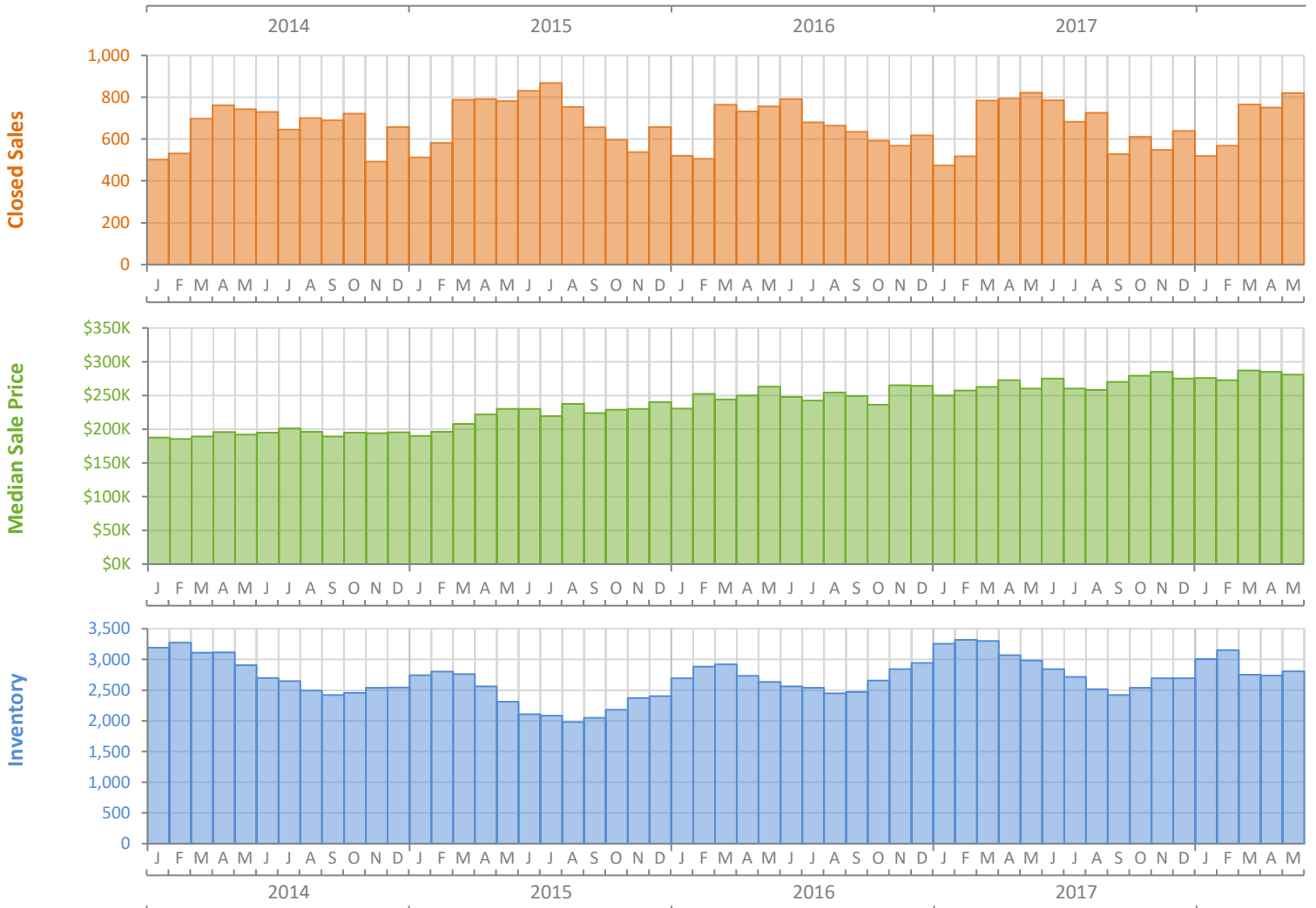
Monthly Market Summary - May 2018

Single Family Homes

Sarasota County



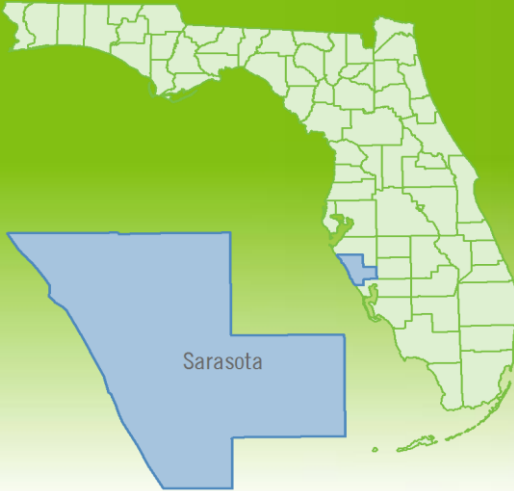
| | May 2018 | May 2017 | Percent Change Year-over-Year |
|--|-----------------|-----------------|-------------------------------|
| Closed Sales | 820 | 822 | -0.2% |
| Paid in Cash | 294 | 296 | -0.7% |
| Median Sale Price | \$280,750 | \$260,000 | 8.0% |
| Average Sale Price | \$381,076 | \$345,835 | 10.2% |
| Dollar Volume | \$312.5 Million | \$284.3 Million | 9.9% |
| Med. Pct. of Orig. List Price Received | 94.8% | 95.0% | -0.2% |
| Median Time to Contract | 45 Days | 46 Days | -2.2% |
| Median Time to Sale | 90 Days | 97 Days | -7.2% |
| New Pending Sales | 770 | 753 | 2.3% |
| New Listings | 792 | 834 | -5.0% |
| Pending Inventory | 1,121 | 1,130 | -0.8% |
| Inventory (Active Listings) | 2,808 | 2,983 | -5.9% |
| Months Supply of Inventory | 4.2 | 4.5 | -6.7% |



Monthly Distressed Market - May 2018

Single Family Homes

Sarasota County



| | | May 2018 | May 2017 | Percent Change Year-over-Year |
|-----------------|-------------------|-----------|-----------|-------------------------------|
| Traditional | Closed Sales | 808 | 790 | 2.3% |
| | Median Sale Price | \$282,250 | \$263,745 | 7.0% |
| Foreclosure/REO | Closed Sales | 7 | 22 | -68.2% |
| | Median Sale Price | \$202,000 | \$160,000 | 26.3% |
| Short Sale | Closed Sales | 5 | 10 | -50.0% |
| | Median Sale Price | \$270,000 | \$224,000 | 20.5% |

